

NPE 2015: TOTAL TOOLING CONTROL

CVe Live, AST's exclusive system that provides users with the ability to view mould activity in real time from within one's plant or across the world, was demonstrated throughout the West Hall of the Orange County Convention Center during NPE2015 last month.

"Several customers installed the CVe Monitor on moulds they had running in various locations throughout the hall," explains Sujit Sheth, General Manager, AST Monitoring. "They also installed the CVe Live System on their moulding machines in order to wirelessly transmit mould activity reports to our booth where we displayed the data on individual screens. There was no better way to demonstrate the advantages of monitoring a mould's activity during NPE."

New CVe Live features include the ability to customize PM schedules for moulds. Whether incremental or absolute, PM schedules can be programmed to suit each mould's requirements. Plus, CVe Live generates a customizable checklist of maintenance procedures that must be completed each time a mould is pulled. The checklist is then stored for historical reference.

Shift schedules can now be customized versus working within very explicit, preset time frames, allowing users to drill down to specific periods of time when production issues occur and thus enable a faster resolution.

CVe Live features new charts and graphs including:

- Efficiency graphs – Shows active time, idle time and sleep time and the corresponding efficiency percentage over a shift or specified time frame
- Theoretical Production Loss – Shows in parts/hour how many parts should have been made based on predefined standards vs. what was actually manufactured under current production conditions
- Cavitation – Provides the ability to record blocked cavity numbers with notes in the system, and chart what the cavitation has been over a specified time period
- Asset Tracking – For moulds that move from plant to plant, this chart displays the last time a tool was connected at what plant and for how long.

"AST has also added a built-in data export feature that allows users to select data fields and export that data to their existing ERP system," adds Sheth. "A lot of useful data is being generated by CVe Live that other systems don't have. Now it's possible to keep data synced between systems within a company so everyone stays on the same page."

Email AST Technology's Monitoring Division to give your company Total Tooling Control. Click **HERE** to view our new CVe Monitor v2 video featuring CVe Live.



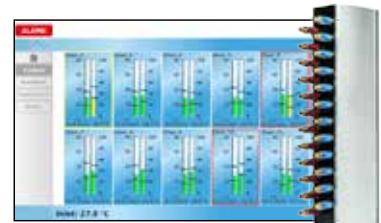
The AST Team had a great NPE, demonstrating in real-time the advantages of monitoring mold activity. Click **HERE** to see more photos from the show.

MORE NEW PRODUCTS

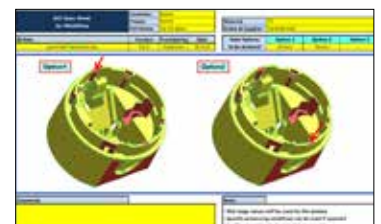
Several other new products were featured at NPE, including the System Moulding Workbook, which provides a structured and documented method for ensuring the best part quality, process stability and cycle times.



Also new is System Cooling, a platform that gives moulders the ability to monitor water flow and temperature circuits inside the mould.



Finally, NPE attendees learned about AST's new Flow Simulation and Analysis services, a comprehensive process for "test driving" one's mould designs via simulation, thus reducing costs and ensuring production goals are met.



For more information on the products featured at NPE visit **pcic-group.com/NPE**.